



# Quartz Creek Transmission Line Rebuild: Girdwood to Indian

Community Meeting  
January 2023



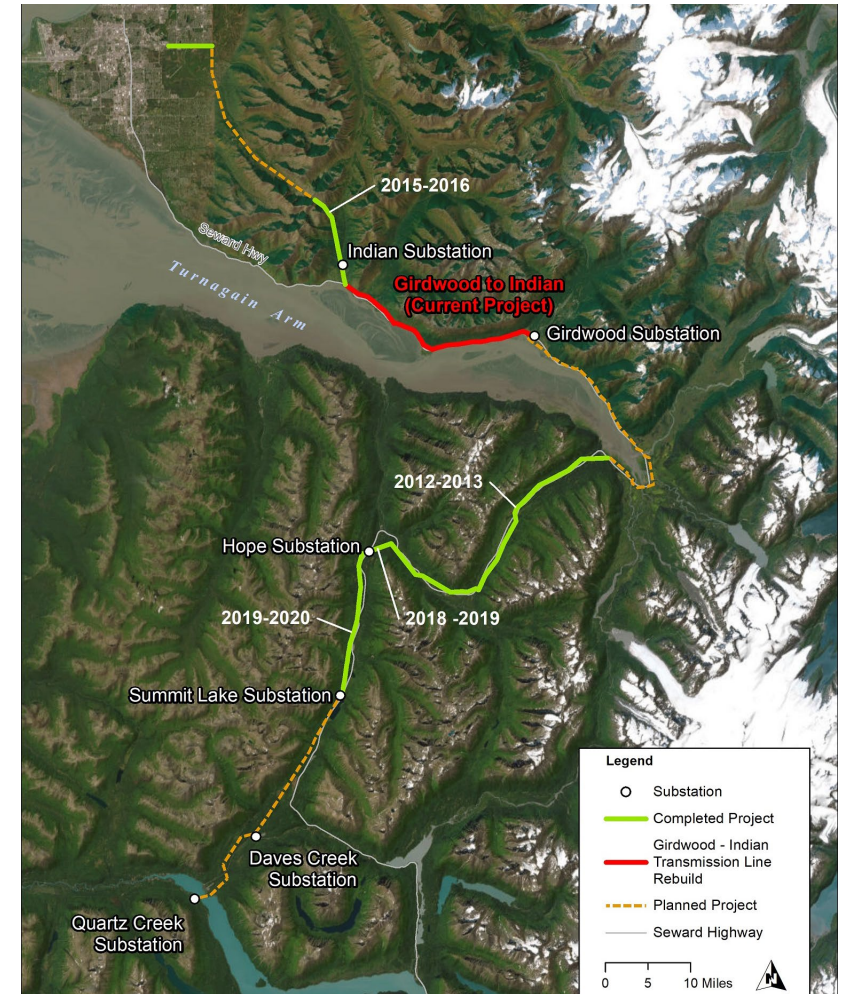
# Quartz Creek Rebuild: Girdwood - Indian

## Introduction:

- Chugach is rebuilding the transmission line segment between the Girdwood and Indian as part of the Quartz Creek Transmission Line Reconstruction.

## Description of Quartz Creek Transmission Line:

- Constructed in 1962 for Cooper Lake Hydroelectric Plant
- Transmission path for Bradley Lake energy (increased use)
- Serves communities in Chugach's territory
- Programmatic rebuild **starting** in 2012
- 36 of 90 miles rebuilt to date



# Quartz Creek Rebuild: Girdwood - Indian

## Proposed Rebuild Schedule

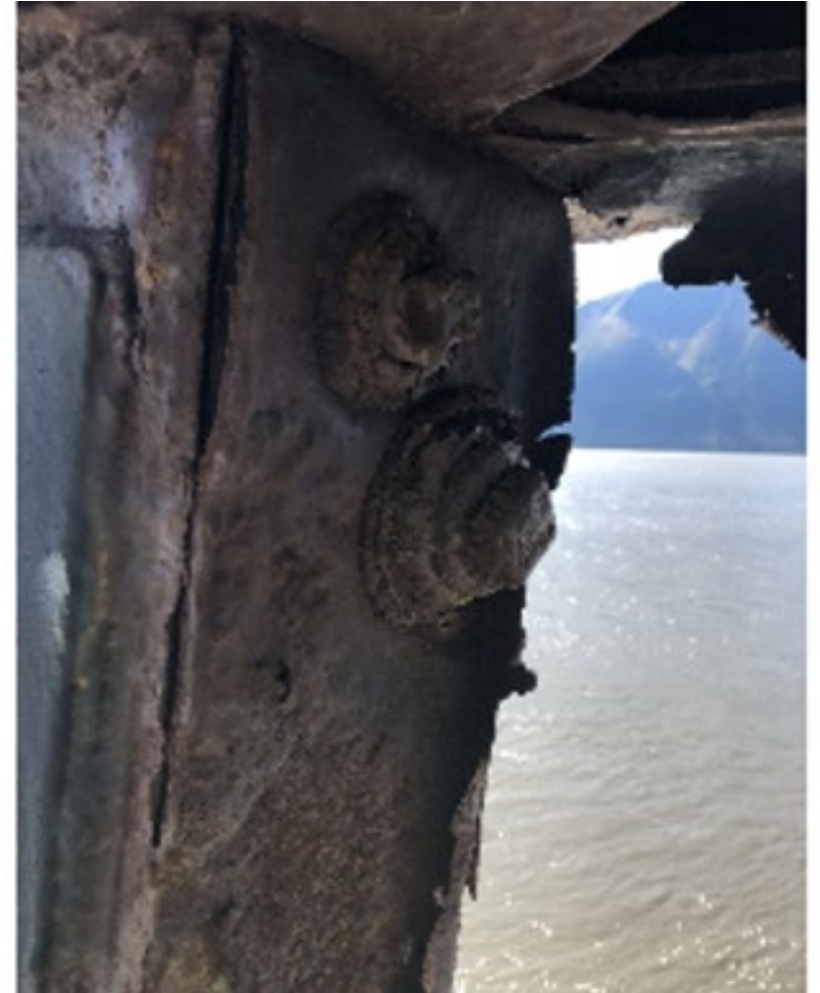
Completed Rebuilds	Approx. Miles	Year	Status
Ingram to Silvertip	15	2012	Complete
Powerline Pass	6	2016	Complete
Silvertip to Hope Substation	4	2017	Complete
Hope Sub. to Summit Substation	10	2018	Complete
Placer River	1	2020	Complete
<b>Completed Subtotal</b>	<b>36 miles</b>		
Planned Rebuilds			
Girdwood Sub. to Indian	11	2024	Planned
Summit Lake to Daves Creek Substations	10	2026	Planned
Daves Creek to Quartz Creek Substations	7	2029	Planned
Girdwood Substation to Ingram Creek	15	2031	Planned
Tudor Junction to Powerline Pass	11	2032	Planned
<b>Planned Subtotal</b>	<b>54 miles</b>		
<b>Total</b>	<b>90 miles</b>		

## **Girdwood to Indian Rebuild Needs:**

- Foundation/anchor corrosion and other damage
- Reliability for Critical Transmission Infrastructure
  - *Transports Power from Bradley and Cooper Lake Hydroelectric Plants*
  - *Delivers Power to Indian, Girdwood, Hope, Cooper Landing, & Moose Pass Communities*

## **Girdwood to Indian Scope of Work:**

- 11 miles of transmission line; 12 miles of Fiber optic cable
- Retire existing transmission line
- Install new: conductor, fiber optic cable, structures, guys, anchors and foundations
  - *Wood, galvanized, and weathered steel construction*



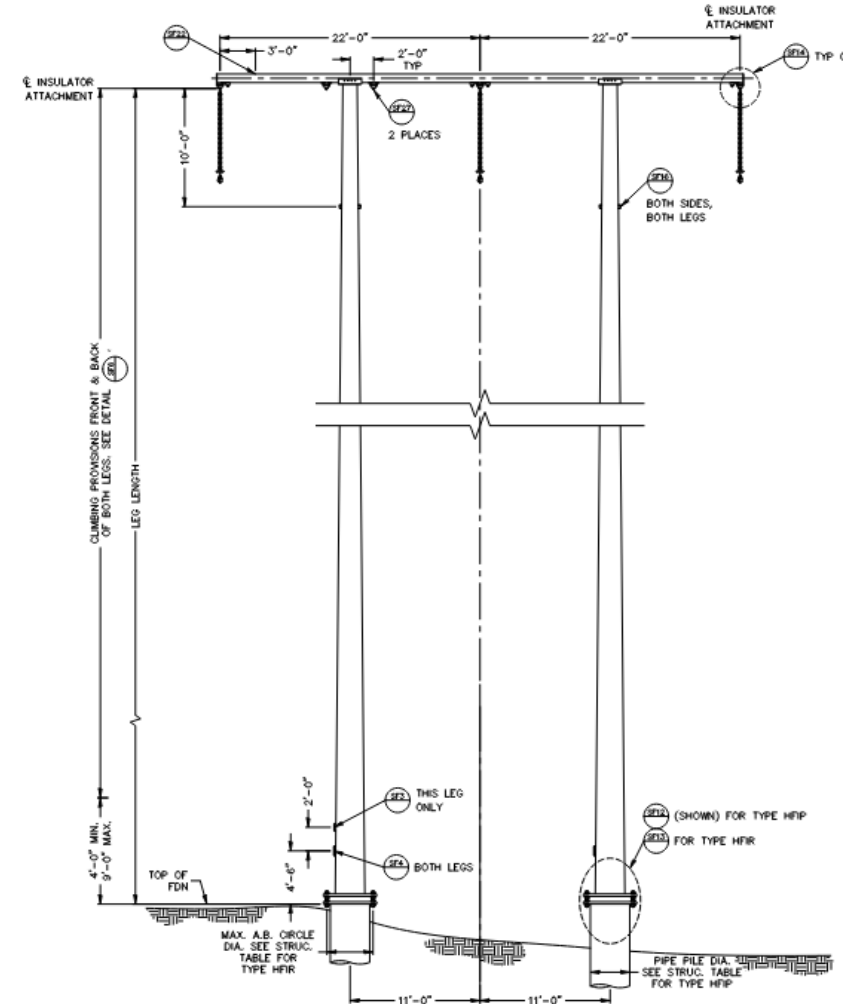
# Quartz Creek Rebuild: Girdwood - Indian

## Upgrade Benefits:

- Replacing assets nearing the end of useful life (original line const. 1962)

## Consistent basis of design and practices:

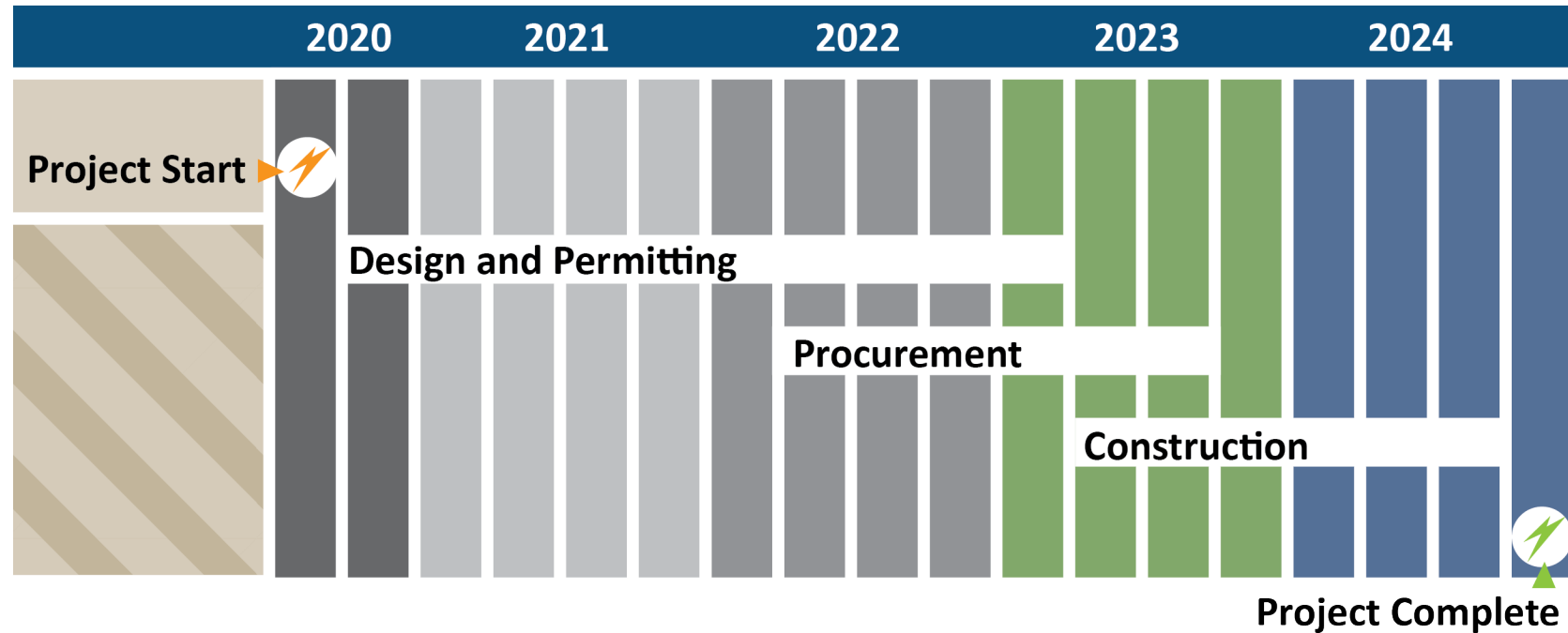
- Anticipating future development: raising clearances and utilizing equipment with greater electrical ratings
- Larger conductor: increasing strength, standardizing, and lowering electrical losses
- Designed for fiber optic cable
- 50-year life robust design addressing known avalanche, strength, wind, icing, and vegetation issues.



# Quartz Creek Rebuild: Girdwood - Indian

## Project Schedule:

- Design in progress
- Permitting in progress
- Material procurement **on going**
- Community outreach initiated
- Clearing scheduled





# Quartz Creek Rebuild: Girdwood - Indian

## Project Impacts

- Clearing of the transmission right-of way
- Contractor presence in transmission right-of-way
- Lane closures on the Seward Highway
  - *To be coordinated with DOT to minimize impact to the public*
- No consumer outages are anticipated

